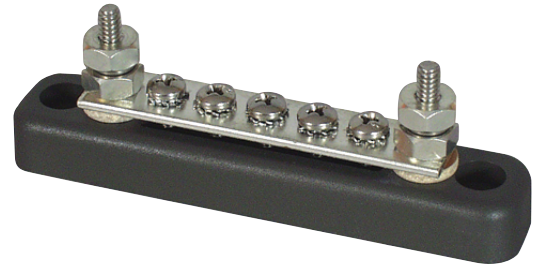


# auto electrical parts

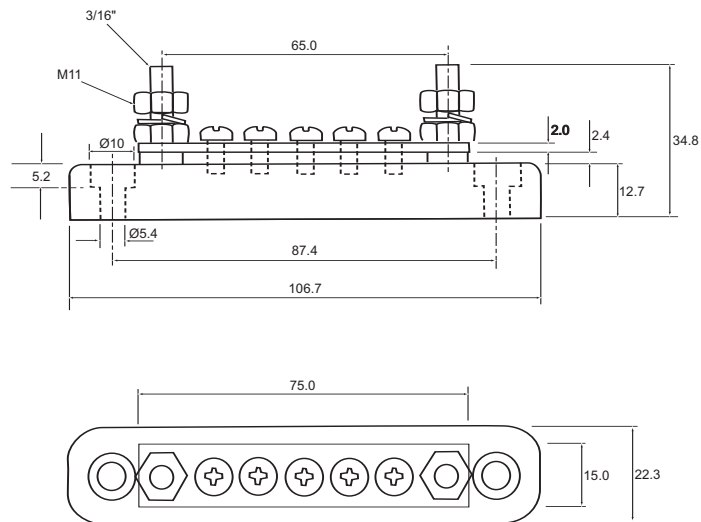
## Technical Information Sheet

### Part No. 0-005-50

Bus bar, 100 amp, tin plated copper bar with 2 stainless steel 3/16" UNF studs and 5 screws. ABS insulating base with recessed 5mm mounting holes. Rated at 100 amp at 48 volt dc.



### Technical Drawing (not to scale)



### Specification

Type	Bus Bar
DC rating @ 48vdc	Continuous 100 amps
Bolts	2 x 3/16" UNF stainless steel studs with 7/16" nuts and spring washer
Screws	5 x 1/8" stainless steel round cross head with locking washer
Bar Material	Tin-plated copper
Base	ABS
Fixing	2 x recessed 5.4mm fixing holes, centres 87.4mm
Weight	65.0g
Dimensions	l 106.7 x w 22.3 x h 34.8mm

The information contained in this document is correct to the best of our knowledge at the time of printing. However, specifications may change at any time without notice.